

# VICTORIA DOMAIN RESERVE MANAGEMENT PLAN REVIEW

JULY 2018

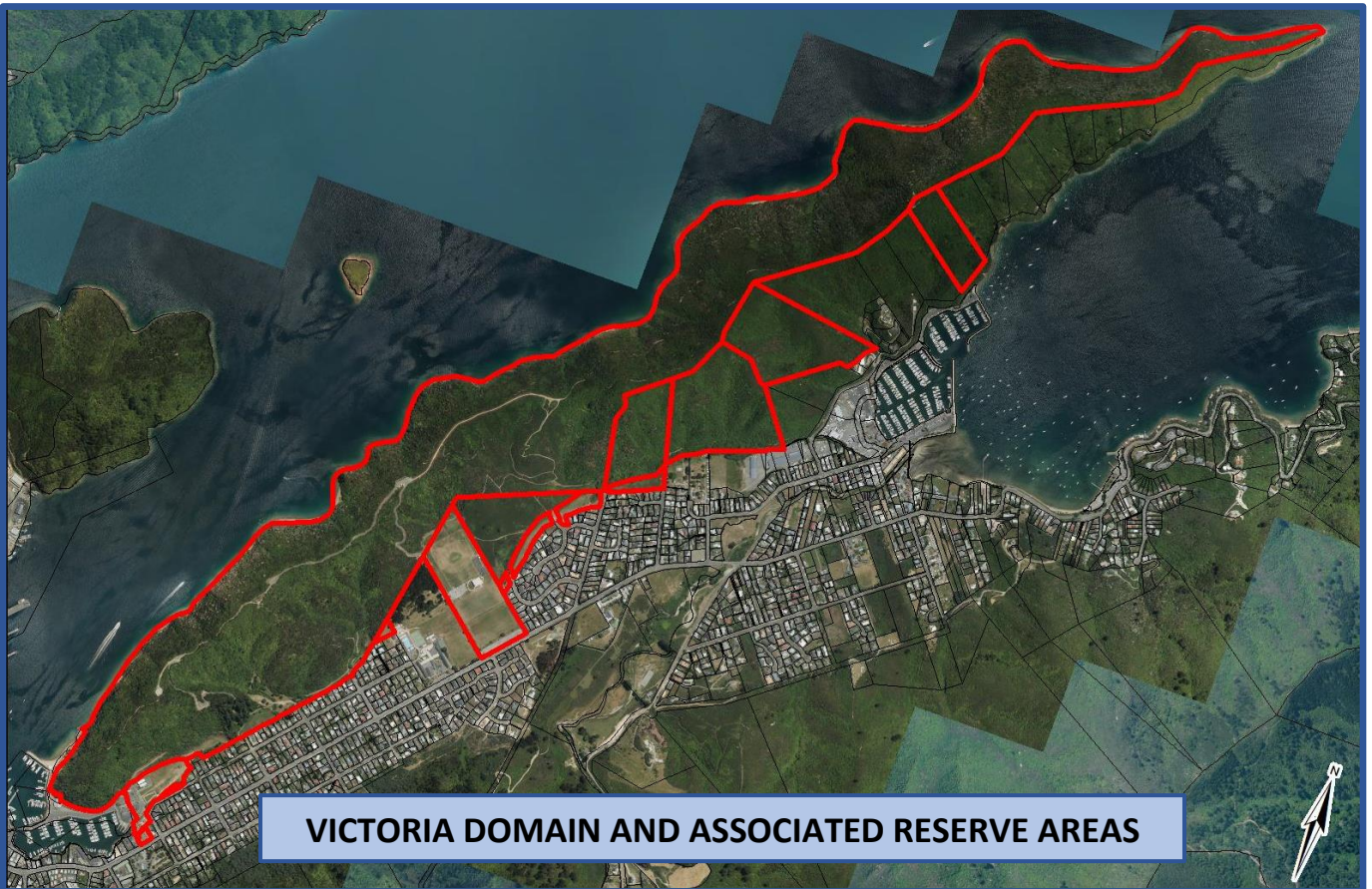


## VICTORIA DOMAIN: THE NEED FOR A NEW RESERVE MANAGEMENT PLAN

In 1995, a reserve management plan was published for Victoria Domain and related reserves (including Shelley Beach, Memorial Park, Waikawa Recreation Reserve and Endeavour Park). Some 23 years later much has changed in the way people use and value these reserve areas and this needs to be considered in developing a new plan.

Te Ātiawa o Te Waka-a-Māui Trust and the Marlborough District Council are working together to prepare a new plan and would like to hear from you. This is an opportunity for you to provide some feedback on the future of this important area of Marlborough. We have had some early conversations with people and groups who use the reserves and look forward to more discussions with the wider community as we develop a draft plan.





### WHAT IS THE PURPOSE OF THE MANAGEMENT PLAN?

A reserve management plan is prepared under the Reserves Act 1977 and includes objectives and policies for the management, protection and future development of a reserve or group of reserves. The plan must *"...provide for and ensure the use, enjoyment, maintenance, protection and preservation....and the development, as appropriate, of the reserve for the purpose for which it was classified...."* Section 41(3) Reserves Act.

Once reviewed, the new reserve management plan for Victoria Domain and related reserves will provide an overall vision and management framework that will help guide both day-to-day and long-term decision making.

### RESERVE AREAS

Currently there are a number of reserves covered in the existing management plan – these are shown in the map above. The largest of these is the Victoria Recreation Reserve comprising some 174 hectares.

Other reserve land includes the Endeavour Park sports fields (8.7 hectares), Memorial Park near Waitohi/Picton Marina (2.6 hectares) and Shelley Beach Recreation Reserve, which is an area of reclaimed land close to Waitohi/Picton.

These reserves, along with several others, total a land area of approximately 206 hectares that are managed under the current plan.

Since the management plan was first prepared, a number of other land parcels have come into the Council's ownership and these can be included in the new plan.

## TIMEFRAME FOR THE REVIEW

PHASE	APPROXIMATE TIMEFRAMES
Request for feedback on reviewing Victoria Domain Reserve Management Plan	12 July 2018
Feedback closes	17 August 2018
Develop draft plan	August/November 2018
Draft plan released to public for submissions	November 2018 to January 2019
Hear submissions	Late February 2019
Develop final plan <ul style="list-style-type: none"> <li>• Incorporate decisions</li> <li>• Approval required from Minister of Conservation</li> <li>• Council adopts final reserve management plan</li> </ul>	March/April 2019



### WHY SHOULD YOU GET INVOLVED?

Victoria Domain is one of the most prominent tracts of land in in Waitohi/Picton that offers a range of both passive and active recreational opportunities. Victoria Domain hosts numerous walking trails and bike tracks that are popular with local mountain biking clubs. There are also spectacular views down the Sounds from the roadway and tracks and the opportunity to view some of the wildlife that flourishes amongst the various tree, bush and shrub species.

The Victoria Domain is also rich in history, with some Māori names given to parts of Victoria Domain (Te Ihu Moeone) including Te Pahoahoa ('the Snout') and Te Tungara- (a reference to a taniwha) at the high point on the southern end. There is likely to be more information on the history of the Domain and we are interested in what information you may be aware of.

### Some Feedback to date...

We have had some informal conversations with individuals and local groups on the management plan review and these are some of their thoughts ...

*... the natural values of the Domain need to be improved*

*... an adequate pest management strategy needs to be in place*

*... the Domain is an important space for educating people on cultural history*

*... there are some significant ecological habitats that the public needs to be educated on so they can be protected*

*... the areas are highly valued for tourism, recreation, environmental monitoring and management purposes*

*... maintaining walking and mountain bike tracks for all users is important*

*... better signage is required to clarify the intended use of tracks*



*Te Pahoahoa ('the Snout') as viewed from Karaka Point*

### HOW CAN YOU GET INVOLVED?

As a Marlborough local, reserve user or resident, you can influence how the Victoria Domain reserves are used, managed and developed in future by providing some suggestions or feedback. We are keen to hear your thoughts. Amongst other things you can think of, we would like to know:

- How you use the Victoria Domain reserve?
- What are your likes/dislikes about the reserves?
- Do the reserves hold any values important to you?
- What are your preferred outcomes for the reserves?

Once the initial feedback period closes, a draft management plan will be prepared. From this, there will be a more formal opportunity for you to provide written submissions and present these to a hearings panel if you wish. We are more than happy to come and discuss with groups the review process and your ideas for how you would like to see the Victoria Domain area managed.



*Endeavour Park sports fields with Victoria Domain in the background*

### HOW TO PROVIDE FEEDBACK/SUGGESTIONS

Your feedback or suggestions should be made in writing and can be emailed, mailed or dropped in to the Council by **5pm on Friday 17<sup>th</sup> of August**.

Feedback can be made in writing and sent to:

Linda Craighead  
Reserves Planner  
Marlborough District Council  
PO Box 443  
Blenheim 7240

Feedback can also be emailed to  
[victoriadomainreview@marlborough.govt.nz](mailto:victoriadomainreview@marlborough.govt.nz)

There is no set format for providing your feedback or suggestions but a form is available to download on the Council's website at:  
<https://www.marlborough.govt.nz/your-council/have-your-say-consultations>

and on the website of Te Ātiawa at  
<http://teatiawatrust.co.nz/news/>

You can also use an online form available on the Council's website. Please make sure you include your name and contact details so we can keep you informed about how the review is progressing.

If you would like to talk with someone about the review please contact Linda Craighead or Grahame Smail at the Council on 03 520 7400 or Sylvie Heard at Te Ātiawa on 03 573 5170.